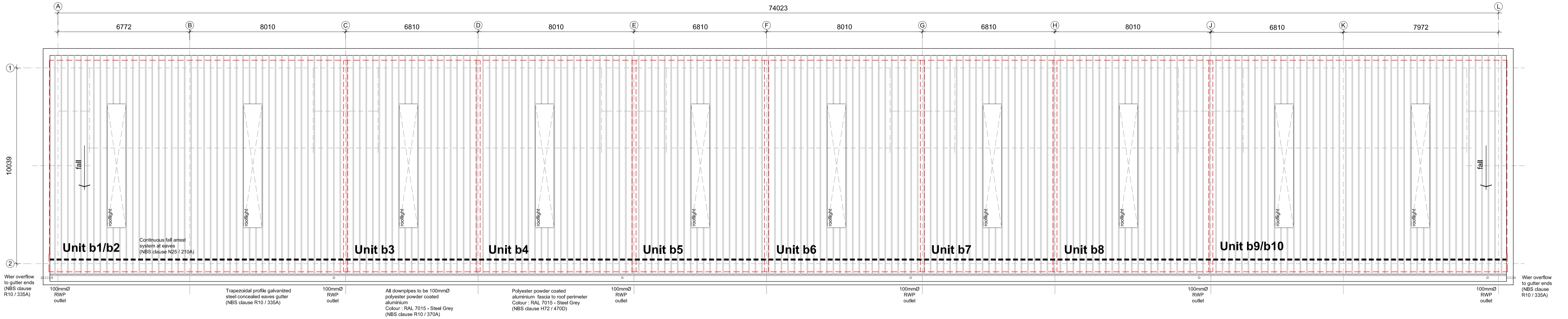


**Notes:**  
 Contractor to check dimensions and notify any discrepancies or errors to S R Davis Architects Limited immediately.  
 Work to figured dimensions only. Do not scale.  
 © All Rights Reserved.

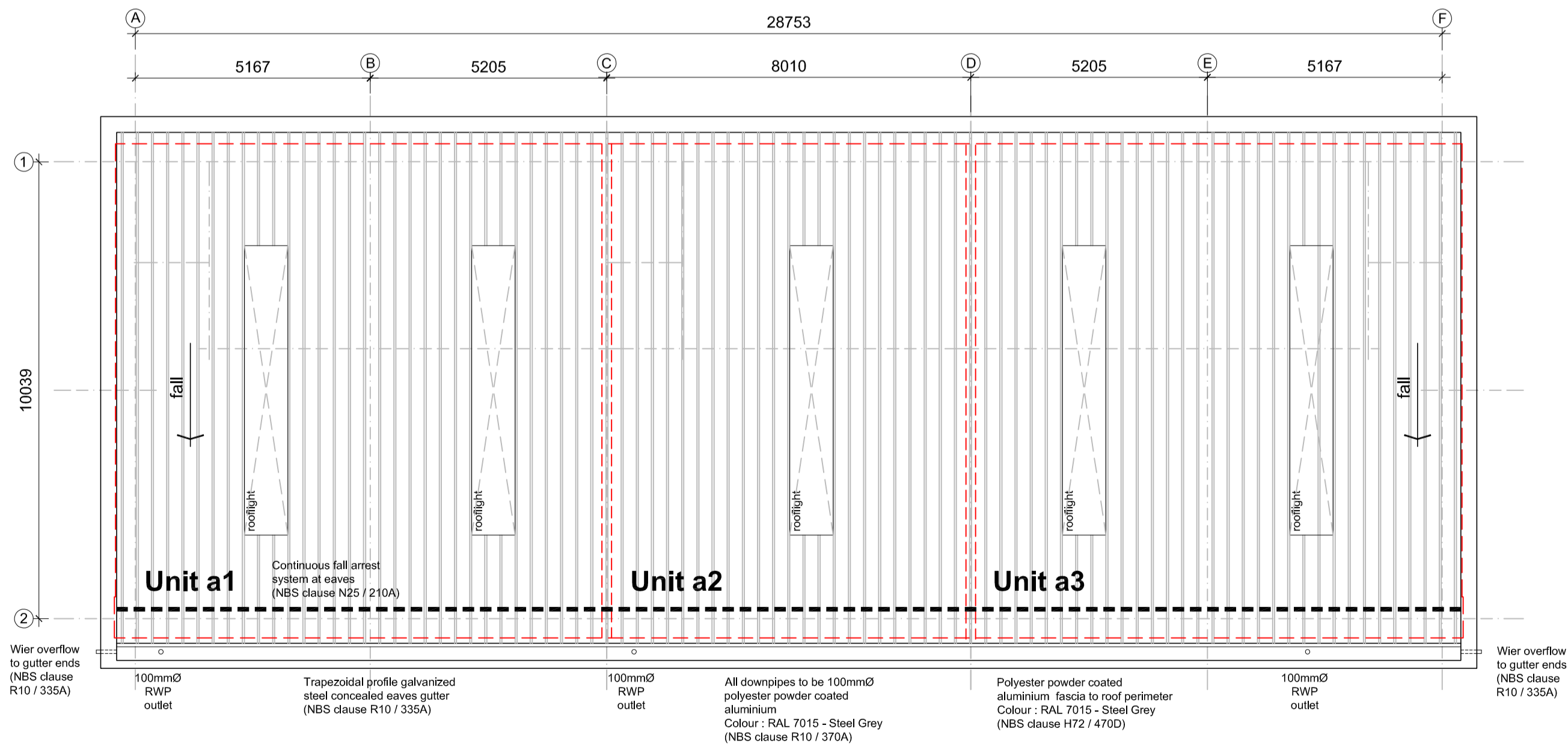


## block b

Blocks A & B Roof Construction (6° Pitch)

To comprise 1000mm module composite trapezoidal roof cladding panels. Colour : to match BS 10A05 - Goosewing Grey (NBS clause H43 / 120A) on cold rolled galvanized steel roof purlins on a structural steelwork frame to structural engineers design & details.

1000mm module polycarbonate rooflights where indicated on the roof plan (NBS clause H43 / 125)



## block a

Rev.	Date	Description	Drawn	Checked
A	19.02.16.	Updated to Engineer's design and issued for Tender.	NW	SRD

 Harborne Court 67-69 Harborne Rd Edgbaston Birmingham B15 3BU T: 0121 456 9234 F: 0121 456 2232 E: reception@srdarchitects.co.uk <a href="http://www.srdarchitects.co.uk">www.srdarchitects.co.uk</a>	Client: <b>Tetrao Investments Limited</b>
	Project: <b>Ratio:Park</b> Kidderminster
Title: <b>Roof Plan :          BLOCKS A &amp; B</b>	Drg. No. <b>1555 / 0 / 002</b>
Drawn NW Date Jan. 2016 Status TENDER	Checked SRD Scale 1:100@A1 Rev. <b>A</b>

**Note:**  
 This drawing to be read with the latest issued revision of SR Davis Architects Limited NBS Specification Ref: 1555 / NBS.  
 The Contractor is to notify SR Davis Architects Limited of any discrepancy between the drawings and NBS Specification prior to return of Tender.  
 This drawing to be read with the latest issued revisions of drawings and specifications issued by :  
 Complete Design Partnership (Civil & Structural Engineers)  
 Bennett Williams (Services Engineers)